



NST

NILES

STEEL

TANK

SINCE 1898™

COMMERCIAL STORAGE TANKS

Meet ASHRAE 90.1b (current edition)

80, 120 and 200 GALLON MODELS

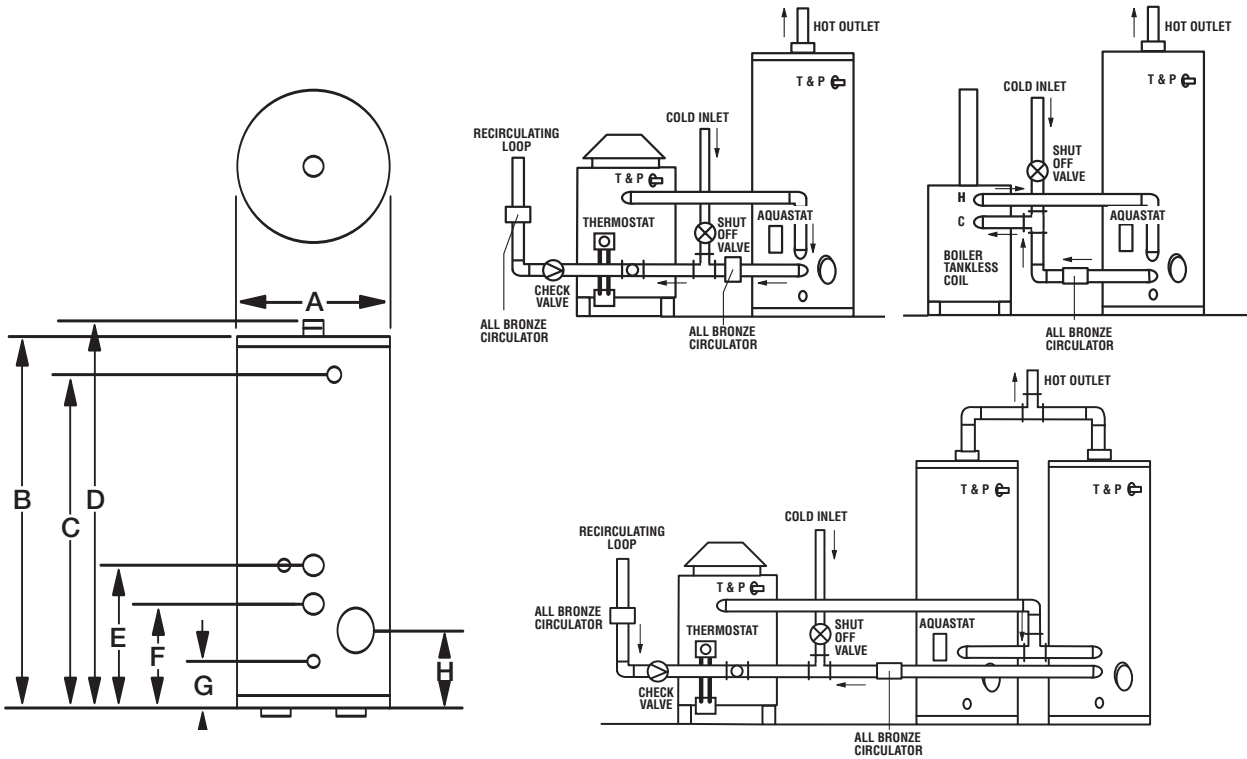
Features:

- **2" Non-CFC foam insulation.**
- **Glass lined steel tank**—Niles Steel Tank's Ultonium™ lining is applied to the interior surface of the steel providing a tough wear resistant lining which minimizes the effects of high temperature hot water.
- **Factory installed dielectric fittings**—no dielectric fittings or unions needed.
- **Side T&P valve opening.**
- **Two magnesium anode rods**—for more even distribution of corrosion protection and longer service life.
- **Hand hole cleanout**—for removal of accumulated lime and sediment deposits.
- **Brass drain valve.**
- **Five year limited warranty on steel tank**—heavy gauge steel automatically formed, rolled and welded to assure a continuous seam for glass lining. Each tank is triple tested to insure quality.
- **One year limited warranty on parts.**



Commercial Storage Tanks

Typical Applications

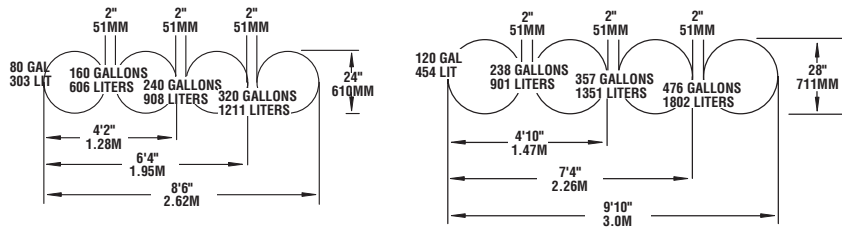


| Model Number | Rated Cap. Gal./Ltr. | A Diam. | B Ht. | C T&P Ht. | D Top H.W. Conn. | E Aquas & Top Circ. Conn. | F Bot. Circ. Conn. | G Drain Ht. | H Cleanout Ht. | Weight Lbs./kg |
|--------------|----------------------|-----------|----------------|----------------|------------------|---------------------------|--------------------|--------------|----------------|----------------|
| J-24-80 | 80/303 | 24"/610mm | 58 3/4"/1492mm | 52 1/2"/1334mm | 59 3/4"/1518mm | 14 1/2"/362mm | 9 1/2"/235mm | 4 3/4"/121mm | 7 1/4"/184mm | 192/87 |
| J-24-80A | 80/303 | 24"/610mm | 58 3/4"/1492mm | 52 1/2"/1334mm | 59 3/4"/1518mm | 14 1/2"/362mm | 9 1/2"/235mm | 4 3/4"/121mm | 7 1/4"/184mm | 192/87 |
| J-28-120 | 119/450 | 28"/711mm | 62 1/2"/1588mm | 55 3/4"/1416mm | 63 3/4"/1613mm | 14 1/2"/368mm | 9 1/2"/241mm | 5"/127mm | 7 1/2"/191mm | 312/142 |
| J-28-120A | 119/450 | 28"/711mm | 62 1/2"/1588mm | 55 3/4"/1416mm | 63 3/4"/1613mm | 14 1/2"/368mm | 9 1/2"/241mm | 5"/127mm | 7 1/2"/191mm | 366/166 |
| J-32-200 | 200/751 | 32"/813mm | 77"/1956mm | 66"/1676mm | 78"/1981mm | 16 1/2"/413mm | 11 1/4"/286mm | 6 3/4"/171mm | 9 1/4"/235mm | 541/245 |

General

Water connections 2" (51mm) NPT. T&P tapping 1" (25mm) NPT. Aquastat tapping 3/8" (19mm) NPT. Certified at 300 PSI (2068 kPa) test pressure and 150 PSI 1034 (kPa) working pressure.

Dimensions and specifications subject to change without notice in accordance with our policy of continuous product improvement.



Sample Specification

The hot water storage tank shall be a Niles Steel Tank model _____ with a storage capacity of not less than _____ gallons/liters. The tank shall be lined with Ultonium™ vitreous enamel and shall have a bolted hand hole cleanout. The tank shall have two extruded magnesium rods installed in separate head couplings. The storage tank shall be insulated with not less than 2" of Non-CFC foam. The entire installation shall be made in compliance with state and local codes and ordinances.



NST
NILES
STEEL
TANK
SINCE 1898™

1701 Terminal Road
P.O. Box 728
Niles, Michigan 49120
PHONE 269.683.1910
FAX 269.683.1953
www.nilesst.com

A Subsidiary of **BRADFORD WHITE**
CORPORATION