



NST

NILES

STEEL

TANK

SINCE 1898™

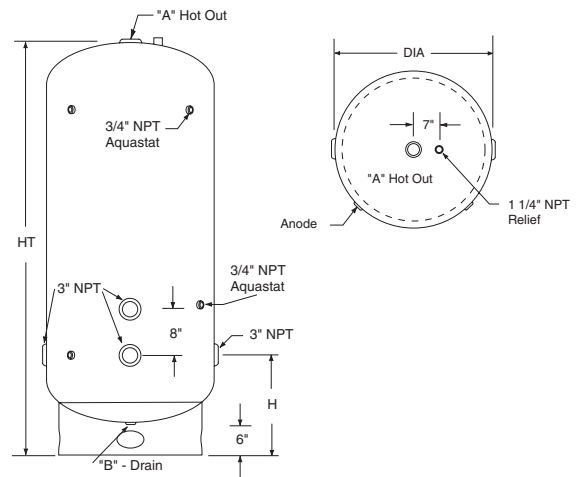
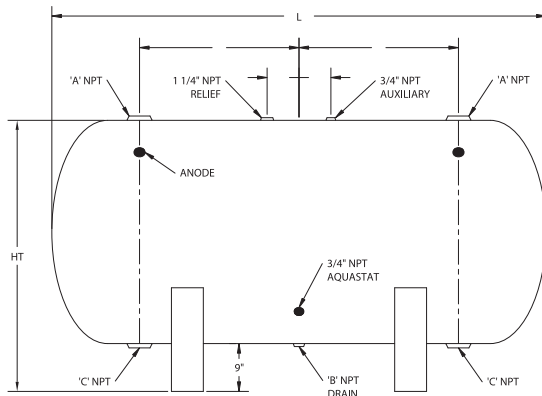
WATER STORAGE VESSELS BARE TANKS

- **Designed for storage of potable water up to 180° F (82° C).**
- **All tanks are constructed and certified** – in accordance with ASME IV, Part HLW for 125 PSI (862 kPa).
- **Glass lined steel tank** - Niles Steel Tank's Ultonium™ lining is applied to the interior surface of the steel providing a tough wear resistant lining which minimizes the effects of high temperature hot water.
- **Magnesium anode rod** - for protection and longer service life.
- **Two 3/4" Aquastat NPT fittings** – Located in the lower and upper part of the tank.
- **6" Skirt height** - allows for easier access to areas under the tank.
- **Lifting Lugs** - standard.
- **Red Oxide Primer** - Shop primer is standard on all tanks. Top coat and finish coats are available.
- **Five year limited warranty on steel tank** - provides warranty protection against tank failure resulting from defects in materials and workmanship.
- **Ten year limited warranty on steel tank (with double glass lining)** – provide superior warranty protection against tank failure. Double glass lining is not an inventory item, built upon request.



Water Storage Vessels

Bare Tanks



Bare Storage Tanks Dimensions

Part No.	*Nominal Gal. Cap.	Gal. Cap.	Dia.	Vert. HT.	Hori. HT.	H	L	Tappings			Weight @125#
								A	B	C	
B-30-063	193	175	30"	69"	39"	19.5	63"	2.5"	1"	3"	284
B-30-075	229	210	30"	81"	39"	19.5"	75"	2.5"	1"	3"	371
B-30-085	260	240	30"	91"	39"	19.5"	85"	2.5"	1"	3"	408
B-30-099	303	280	30"	105"	39"	19.5"	99"	2.5"	1"	3"	460
B-30-111	340	320	30"	117"	39"	19.5"	111"	2.5"	1"	3"	504
B-36-078	344	310	36"	84"	45"	21"	78"	2.5"	1"	3"	581
B-36-085	375	340	36"	91"	45"	21"	85"	2.5"	1"	3"	624
B-36-090	397	360	36"	96"	45"	21"	90"	2.5"	1"	3"	655
B-36-102	449	415	36"	108"	45"	21"	102"	2.5"	1"	3"	729
B-36-114	502	465	36"	120"	45"	21"	114"	2.5"	1"	3"	802
B-36-126	555	515	36"	132"	45"	21"	126"	2.5"	1"	3"	876
B-42-081	486	435	42"	87"	51"	22.5"	81"	3"	1"	3"	762
B-42-085	510	460	42"	91"	51"	22.5"	85"	3"	1"	3"	791
B-42-093	558	505	42"	99"	51"	22.5"	93"	3"	1"	3"	848
B-42-105	630	575	42"	111"	51"	22.5"	105"	3"	1"	3"	934
B-42-117	702	645	42"	123"	51"	22.5"	117"	3"	1"	3"	1020
B-42-129	774	720	42"	135"	51"	22.5"	129"	3"	1"	3"	1106
B-42-139	846	790	42"	145"	51"	22.5"	139"	3"	1"	3"	1192
B-48-073	572	500	48"	79"	57"	24"	73"	3"	1"	3"	1025
B-48-084	658	580	48"	90"	57"	24"	84"	3"	1"	3"	1145
B-48-096	752	675	48"	102"	57"	24"	96"	3"	1"	3"	1275
B-48-108	846	765	48"	114"	57"	24"	108"	3"	1"	3"	1405
B-48-120	940	860	48"	126"	57"	24"	120"	3"	1"	3"	1535
B-48-141	1128	1040	48"	147"	57"	24"	141"	3"	1"	3"	1796
B-48-168	1306	1225	48"	174"	57"	24"	168"	3"	1"	3"	2056
B-54-099	981	875	54"	105"	63"	25.5"	99"	3"	1.5"	3"	1596
B-54-123	1219	1110	54"	129"	63"	25.5"	123"	3"	1.5"	3"	1889
B-54-147	1457	1340	54"	153"	63"	25.5"	147"	3"	1.5"	3"	2182
B-54-183	1814	1690	54"	189"	63"	25.5"	183"	3"	1.5"	3"	2622
B-60-114	1395	1245	60"	120"	69"	27"	114"	3"	1.5"	3"	2299
B-60-138	1689	1530	60"	144"	69"	27"	138"	3"	1.5"	3"	2704
B-60-168	1983	1820	60"	168"	69"	27"	168"	3"	1.5"	3"	3110
B-60-186	2276	2105	60"	192"	69"	27"	186"	3"	1.5"	3"	3516
B-60-210	2570	2395	60"	216"	69"	27"	210"	3"	1.5"	3"	3922
B-72-120	2115	1865	72"	126"	81"	30"	120"	3"	1.5"	3"	2876
B-72-144	2538	2285	72"	150"	81"	30"	144"	3"	1.5"	3"	3363
B-72-168	2961	2700	72"	174"	81"	30"	168"	3"	1.5"	3"	3851
B-72-192	3384	3115	72"	198"	81"	30"	192"	3"	1.5"	3"	4338
B-72-216	3807	3530	72"	222"	81"	30"	216"	3"	1.5"	3"	4825
B-72-250	4406	4120	72"	256"	81"	30"	250"	3"	1.5"	3"	5516
B-84-138	3310	2915	84"	144"	93"	33"	138"	3"	1.5"	3"	4647
B-84-160	3886	3480	84"	168"	93"	33"	160"	3"	1.5"	3"	5328
B-84-186	4462	4045	84"	192"	93"	33"	186"	3"	1.5"	3"	6009
B-84-210	5038	4610	84"	216"	93"	33"	210"	3"	1.5"	3"	6689
B-84-256	6141	5695	84"	262"	93"	33"	256"	3"	1.5"	3"	7994

Note: Shaded area is what we have in inventory.

002-NST 0405

W-H-196 Test = 7.0 - 8.0 mg/in²

The W-H-196 Test is required for water heaters sold to the U.S. Government.

The test consists of exposing the enamel to a boiling (212 F) 4/10% solution of Sodium Bicarbonate for eight (8), eighteen (18) hour cycles. Maximum weight loss after eight cycles is not to exceed 15 mg/in².

PEI T-21 Spot Acid Test = Class A

PEI T-21 Spot Acid Test is used to determine enamel resistance to acids. The test area is examined for visible effects on the enamel and is graded from Class AA (no sign of etching) to Class D (etched surface).

Impact resistance = Class 4 to 5

The Impact Resistance Test is used to determine the adhesive qualities of enamel to the substrate. The enamel is graded from Class 1 (worst) to Class 5 (best), fractured glass adhering solidly to the impact area. Class 3 is acceptable.

Hi-Pot Test Less than 20

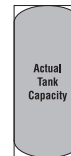
The HYPO Test is a measurement of the continuity of the glass coating (Spark Test). Fifty (50) breakthroughs or fewer are the usual specification for HWT's.

Factory Options Include:

Epoxy Lining	EX	Saddles.....	SD
Double glass coating	DG	Stainless Steel construction	SS
Manway.....	MW	150 psi	5
Hand hole.....	HH		

Add suffix on model number to indicate options

*Nominal gallon capacity is listed for comparison purposes. Nominal gallon capacity refers to a hypothetical measurement in a case where overall tank length remains the same but instead of an elliptical head and base, the gallons are calculated as if it was built with flat heads and base. - See diagram.



*Nominal capacity includes the white area in addition to actual tank capacity.



NST
NILES
STEEL
TANK
SINCE 1898

1701 Terminal Road
P.O. Box 728
Niles, Michigan 49120
PHONE 269.683.1910
FAX 269.683.1953
www.nilesst.com

A Subsidiary of **BRADFORD WHITE**

Printed in the U.S.A.