



## Water Storage Vessels Jacketed & Insulated Tanks



### *The Water Storage Vessels feature:*

- **Glass Lined Steel Tank**—Niles Steel Tank's Ultonium™ lining is applied to the interior surface of the steel providing a tough wear resistant lining which minimizes the effects of high temperature hot water.
- **Designed for 180°F.**
- **Sturdy Steel Jacket**—Heavy gauge steel jacket.
- **2" High Density Foam Insulation**—Minimizes heat loss with an R value of 12.5.
- **Magnesium Anode Rod**—for protection and longer service life.
- **Two 3/4" Aquastat NPT Fittings**—Located in the lower and upper part of the tank.
- **All Tanks are Constructed and Certified**—In accordance with ASME IV, Part HLW for 125 PSI (862 kPa).
- **Five Year Limited Warranty on Steel Tank**—Provides warranty protection against tank failure resulting from defects in materials and workmanship.
- **Ten Year Limited Warranty on Steel Tank (with double glass lining)**—Provide superior warranty protection against tank failure. Double glass lining is not an inventory item, built upon request.

### **5-Year Limited Tank Warranties / 5-Year Limited Warranty on Component Parts.**

For more information on warranty, please visit [www.nilesst.com](http://www.nilesst.com)

For products installed in USA, Canada and Puerto Rico. Some states do not allow limitations on warranties. See complete copy of the warranty included with the heater.

MANUFACTURED UNDER ONE OR MORE OF THE FOLLOWING U.S. PATENTS: 5,954,492; 5,761,379; 5,943,984; 5,081,696; 5,988,117; 6,142,216; 5,199,385; 5,574,822; 5,372,185; 5,485,879; 5,277,171; (B1)5,341,770; 5,660,165; 5,596,952; 5,682,666; 4,904,428; 5,023,031; 5,000,893; 4,669,448; 4,829,983; 4,808,356; 5,115,767; 5,092,519; 5,052,346; 4,416,222; 4,628,184; 4,861,968; 4,672,919; Re. 34,534; 7,270,087 B2. OTHER U.S. AND FOREIGN PATENT APPLICATIONS PENDING. CURRENT CANADIAN PATENTS: 1,272,914; 1,280,043; 1,289,832; 2,045,862; 2,112,515; 2,108,186; 2,107,012; 2,092,105; 2,409,271. Ultonium® is a registered trademark of Niles Steel Tank.

# Water Storage Vessels - Jacketed & Insulated Tanks

## Vertical Storage Tanks

Meet or exceed ASHRAE 90.1b (current standard)

### Dimensions

Part No.	Nominal Gal. Cap.	Actual Gal. Cap.	Vert. (HT)	Horiz. (HT)	"L"	"D"	Base Clearance	"H"	Diameter	Tapping "A"	Tapping "B"	Tapping "C"	Weight @125#
JS-30-063	193	175	71"	41"	67"	18"	2"	19.5"	34"	2.5"	1"	3"	438
JS-30-075	229	210	83"	41"	79"	24"	2"	19.5"	34"	2.5"	1"	3"	493
JS-30-085	260	240	93"	41"	89"	29"	2"	19.5"	34"	2.5"	1"	3"	539
JS-30-099	303	280	107"	41"	103"	36"	2"	19.5"	34"	2.5"	1"	3"	603
JS-30-111	340	320	119"	41"	115"	42"	2"	19.5"	34"	2.5"	1"	3"	658
JS-36-072	318	285	80"	47"	76"	21"	2"	21"	40"	2.5"	1"	3"	667
JS-36-078	344	310	86"	47"	82"	24"	2"	21"	40"	2.5"	1"	3"	710
JS-36-085	375	340	93"	47"	89"	27.5"	2"	21"	40"	2.5"	1"	3"	760
JS-36-090	397	360	98"	47"	94"	30"	2"	21"	40"	2.5"	1"	3"	796
JS-36-102	449	415	110"	47"	106"	36"	2"	21"	40"	2.5"	1"	3"	881
JS-36-114	502	465	122"	47"	118"	42"	2"	21"	40"	2.5"	1"	3"	967
JS-36-126	555	515	134"	47"	130"	48"	2"	21"	40"	2.5"	1"	3"	1,053
JS-42-081	486	435	89"	53"	85"	24"	2"	22.5"	46"	3"	1"	3"	917
JS-42-084	504	453	92"	53"	88"	25.5"	2"	22.5"	46"	3"	1"	3"	942
JS-42-093	558	505	101"	53"	97"	30"	2"	22.5"	46"	3"	1"	3"	1,017
JS-42-105	630	575	113"	53"	109"	36"	2"	22.5"	46"	3"	1"	3"	1,117
JS-42-117	702	645	125"	53"	121"	42"	2"	22.5"	46"	3"	1"	3"	1,217
JS-42-129	774	720	137"	53"	133"	48"	2"	22.5"	46"	3"	1"	3"	1,317
JS-42-139	846	790	147"	53"	143"	53"	2"	22.5"	46"	3"	1"	3"	1,400
JS-48-073	572	500	81"	59"	77"	18.5"	2"	24"	52"	3"	1"	3"	1,176
JS-48-084	658	580	92"	59"	88"	24"	2"	24"	52"	3"	1"	3"	1,310
JS-48-096	752	675	104"	59"	100"	30"	2"	24"	52"	3"	1"	3"	1,456
JS-48-108	846	765	116"	59"	112"	36"	2"	24"	52"	3"	1"	3"	1,602
JS-48-120	940	840	128"	59"	124"	42"	2"	24"	52"	3"	1"	3"	1,748
JS-48-141	1128	1040	149"	59"	145"	52.5"	2"	24"	52"	3"	1"	3"	2,003

### W-H-196 Test = 7.0 - 8.0 mg/in<sup>2</sup>

The W-H-196 Test is required for water heaters sold to the U.S. Government.

The test consists of exposing the enamel to a boiling (212 F) 4/10% solution of Sodium Bicarbonate for eight (8), eighteen (18) hour cycles. Maximum weight loss after eight cycles is not to exceed 15 mg/in<sup>2</sup>.

### PEI T-21 Spot Acid Test = Class A

PEI T-21 Spot Acid Test is used to determine enamel resistance to acids. The test area is examined for visible effects on the enamel and is graded from Class AA (no sign of etching) to Class D (etched surface).

### Impact resistance = Class 4 to 5

The Impact Resistance Test is used to determine the adhesive qualities of enamel to the substrate. The enamel is graded from Class 1 (worst) to Class 5 (best), fractured glass adhering solidly to the impact area. Class 3 is acceptable.

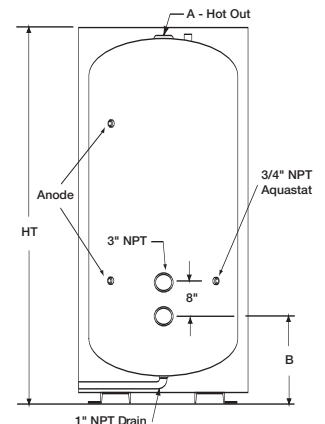
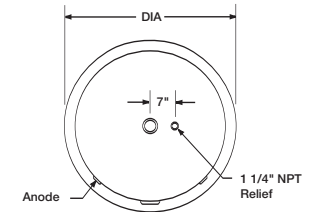
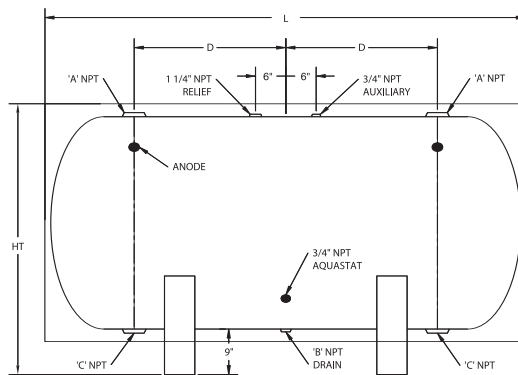
### Hi-Pot Test Less than 20

The HYPO Test is a measurement of the continuity of the glass coating (Spark Test). Fifty (50) breakthroughs or fewer are the usual specification for HWT's.

### Factory Options Include:

Epoxy Lining	EX
Double glass coating	DG **
Manway 12" x 16"	MW
Hand hole 4" x 6"	HH
Lifting Lugs	LL
Stainless Steel construction	SS
150 psi	5
Add suffix on model number to indicate options	

\*\*Not available below 240 gallons



**NST**  
NILES  
STEEL  
TANK  
SINCE 1898

1701 Terminal Road • Niles, Michigan 49120  
Telephone 269-683-1910 • Fax 269-683-1953 • www.nilesst.com

A Subsidiary of **BRADFORD WHITE**

©2009, Bradford White Corporation. All rights reserved.